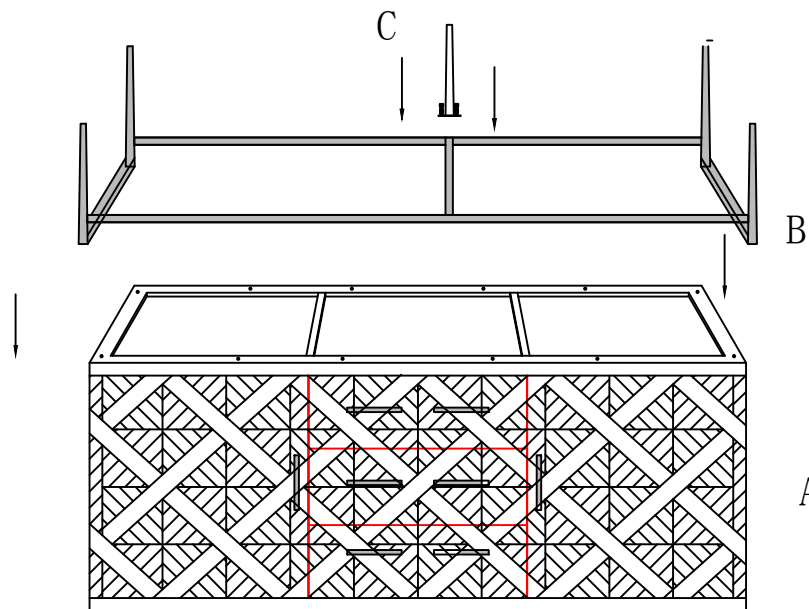


REVELATION

by UTTERMOST



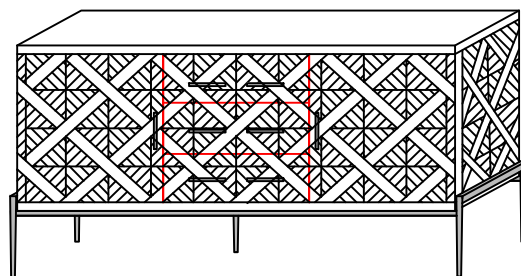
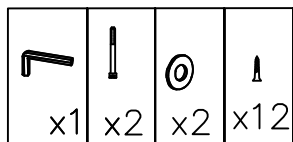
Assembly Instruction

R24892

1. Take the parts carefully out of the carton, and place it on a flat surface, make sure that the parts will not be damaged.
 2. Place part A on flat ground conversely.
 3. Lock part B to the part A with screws.
 4. Fix the part C to the part B by allen screws.
- The product is heavy, multiple people are needed for assembly.

Hardware and tool included: allen screws, allen wrench, washers, screws.

To clean, wipe with soft dry cloth.



PO BOX 558/3325 GRASSY HILL RD. ROCKY MOUNT. VIRGINIA 24151

www.revelationbyuttermost.com